

DL SERIES

Digital Level



Features

- Advanced Accuracy
- Trigger Key Function
- 3.0 Inch Colorful Touch Screen for KL-03
- Magnetical-damped Compensator
- Multiple Data Transform
- Bluetooth Remote Control for KL-03



KL-03

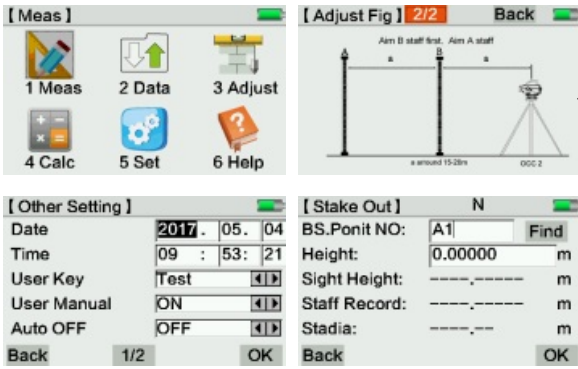


KL-07

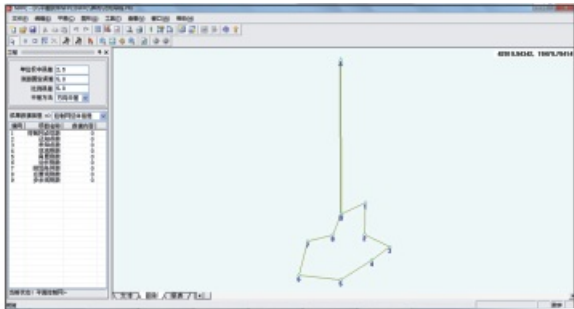


KL-15

Software



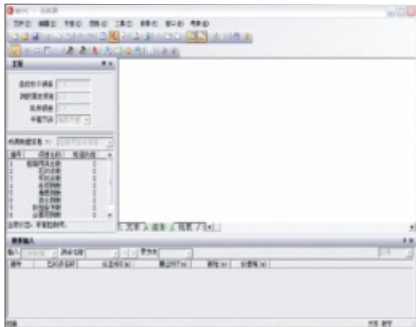
Intelligent On-board System for KL-03



Powerful Post-processing Software

It contains adjustment routines for dynamic adjustment of horizontal & vertical control network and angle & direction adjustment.

Easily zoom in or out to see the overall data in graphic.



Seamless Transfer with Various Data Formats

Station/Line	SD ₁ (m)	Ac.Sight(Dist)m	SD ₂ (m)	il	Height (m)
1	35.2335	35.2335	3.1135	0.1135	
2	54.682	85.9155	-0.262	-0.1685	
3	40.910	133.0365	-0.527	-1.0655	
4	35.988	173.5185	-0.458	-1.5435	
5	37.168b	211.168c	-0.615b	-2.238a	
6	55.133	260.2670	0.731	-1.564a	
1	55.1430	55.1430	-0.7300	-0.7300	
2	37.1075	92.3425	3.5835	-0.1665	
3	35.1025	127.4430	3.6895	0.3390	
4	40.9685	173.3485	1.6915	1.4560	
5	34.5470	223.5555	3.2240	1.6000	
6	35.2710	265.2125	-0.4260	1.0140	

Precision Analysis & Report

The DL Data Download & Processor Software, makes the field work easier to display the complex leveling tasks.

Specifications

Item		KL-03	KL-07	KL-15
Height Accuracy (standard deviation for 1km double run leveling)	Digital Reading	0.3mm	0.7mm	1.5mm
	Optical Reading	2.0mm		
Distance Accuracy	Digital Reading	D≤10m:10mm; D>10m:D*0.001		
Distance Range	Digital Reading	2m~110m		
Minimum Display	HD	0.01mm/0.1mm/1mm	1mm/0.1mm	0.1mm/1mm
	Distance	0.1/1cm		
Measuring Time		within 3s in normal condition		
Telescope	Magnification	32X		
	Resolving Power	3"		
	Field of View	1 30'		
	Multiple Constant	100		
	Additive Constant	0		
Compensator	Type	magnetic-damped		
	Range	> 12'		
	Accuracy	0.20"/1'	0.30"/1'	0.50"/1'
Data Storage (for only DL-201, DL-2007)	Storage	128MB	16MB	
	Point Name	increasing/decreasing/customized		
	Connection	RS232/Bluetooth	USB	
	External Storage	U disk	SD Card	
Circular vial Accuracy		8'/2mm		
Display		3.0 inch LCD Colorful Touch Screen	160*64dpi LCD with illumination	128*32dpi LCD with illumination
Working Temperature		-20 C~50 C		
Dimension		230mmX225mmX203mm	230mmX150mmX210mm	
Weight		3.1kg	2.5kg	
IP Standard		IP65	IP54	

Invar Staff NSI-20M Specification

1	Circle Bubble		≤12'/2mm
2	Surface curvature distinction		≤4mm
3	Vertical of central axis and underside		≤5'
4	Tolerance of zero point		≤0.05mm
5	Basic barcode graduation tolerance	Deviation	≤0.02mm
		Standard deviation	≤0.013mm
6	Interval tolerance		≤0.04mm